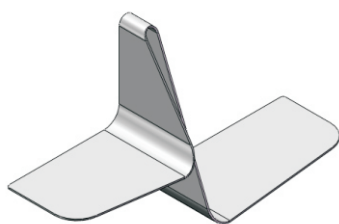


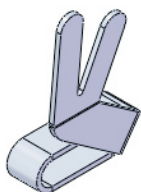
# TULIP ACCESSORI



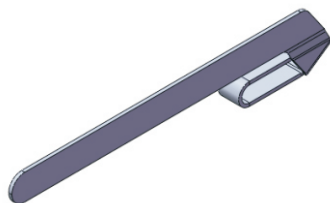
IT MENSOLA  
 GB SHELF  
 D ABLAGE



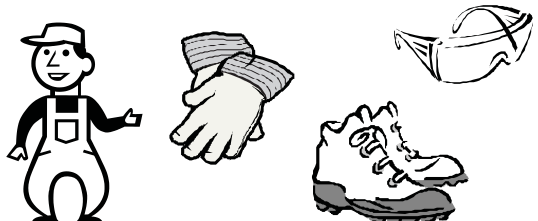
IT PORTAROTOLI  
 GB TOILET-PAPER HOLDER  
 D TOILETTPAPIERHALTER



IT APPENDINO  
 GB HOOK  
 D HACKEN



IT PORTASALVIETTE  
 GB TOWEL RAIL  
 D HANDTUCHHALTER



## IT INDICE

- 1. FERRAMENTA ..... 1
- 2. INSTALLAZIONE ..... 2

## GB CONTENTS

- 1. HARDWARE KIT ..... 1
- 2. INSTALLATION ..... 2

## D INHALTSVERZEICHNIS

- 1. EISENWAREN-KIT ..... 1
- 2. MONTAGE ..... 2

## F INDEX

- 1. QUINCAILLERIE ..... 1
- 2. INSTALLATION ..... 2

**IT** ATTENZIONE:  
 - Verificare la condizione del supporto prima dell'installazione e di scegliere viti adeguate al supporto esistente.



**GB** ATTENTION:  
 - Check the support condition before proceeding with the installation ; also choose adequate screws for the existing support.



**D** ACHTUNG:  
 - Vor der Installation des Spiegels den Zustand überprüfen; wählen Sie angemessene Schrauben für bestehenden Halter aus.



**F** ATTENTION:  
 - Vérifier les conditions du support avant l'installation et choisir les vis appropriées au support existant.

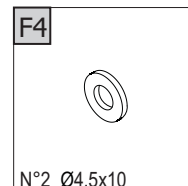
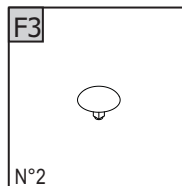
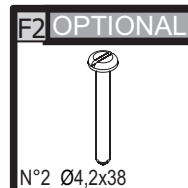
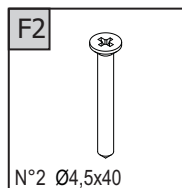
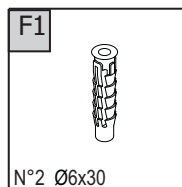
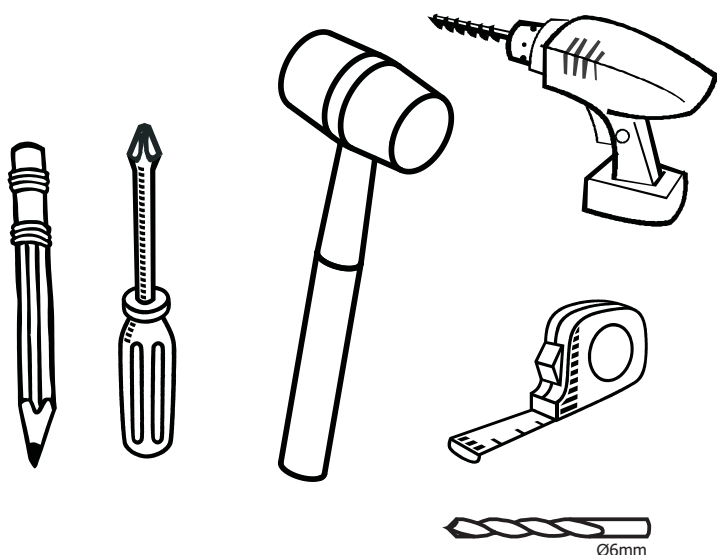


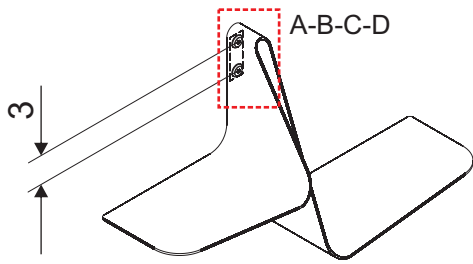
### IT 1. FERRAMENTA

### GB 1. HARDWARE KIT

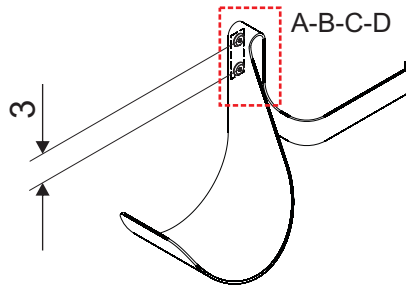
### D 1. EISENWAREN-KIT

### F 1. QUINCAILLERIE

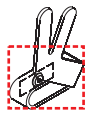




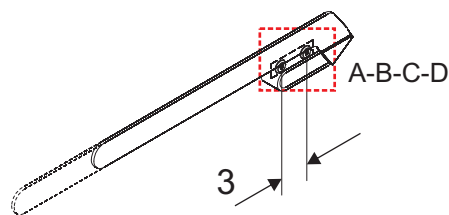
- IT MENSOLA
- GB SHELF
- D ABLAGE
- F ETAGÈRE



- IT PORTAROTOLI
- GB TOILET-PAPER HOLDER
- D TOILETTENPAPIERHALTER
- F PORTE ROULEAU



- IT APPENDINO
- GB HOOK
- D HACKEN
- F CROCHET



- IT PORTASALVIETTE
- GB TOWEL RAIL
- D HANDTUCHHALTER
- F PORTE SERVIETTE

